

Bucks Woodturners

Monthly Newsletter

September 2013

General Meeting 4th Monday - September 23rd!

Contents

Stephen Hogbin Visits Philly in September.....	1
Turner's Clever Box	1
Turner's Box Demonstration	2
Major Works by Club Members ...	3
Member News	4-6
Hearn Hardwoods Open House ...	6
Penn State Industries	6
Weekend with Stephen Hogbin ...	7
New Hope Arts Call for Artists.....	8
Center for Art in Wood	9

Important Dates

Sept General Meeting	Sept 23
CAW: <i>allTURNatives: Form + Spirit</i> 2013	thru Oct 12
CAW: Coming Full Circle ...	Sept 19
CAW: <i>Pattern from Process</i>	Sept 20
October General Meeting....	Oct 21
CAW: <i>Shadow of the Turning</i>	Oct 25

Stephen Hogbin Visits Philly in September



"Legendary woodturner Stephen Hogbin's work has been groundbreaking at every turn. He first burst on the scene in the early 1970s with an exhibition of turnings like no one had ever seen—cut apart, re-assembled, enhanced by carving, and bearing little resemblance to the standard round stuff that characterized the lathe." So goes the description of Stephen and his new book on [Amazon](#).

Mark Sfirri said in his [2008 Woodwork magazine article, Hogbin Reflecting](#): "If Hogbin's early work emerged on the scene today, it seems to me that it would have an even greater impact than it did then, because the field is so much larger and has a higher profile. Thirty years later, the work is still completely on the cutting edge."



In a rare opportunity, Stephen Hogbin will be coming to the area and making several appearances discussing, among other things, creativity, design, and process. See Stephen's [website](#) to view those ground breaking works and the breadth and longevity of his creativity and workmanship.

Page 7 shows his full calendar next week, including his visit to Bucks Woodturners at our general meeting, starting 7:30 on Monday the 23rd.

Turner's Clever Box Demonstrated in June

2013 ITE Artist, Neil Turner, provided a great demonstration on how he created a lidded box like the one shown on the right. This former Australian sheep and wheat farmer, now devoting himself to turning and his art, takes some of his cues from the sea near Perth and his home.



Starting with a cylinder, both ends turned with tenons for a 4 jaw chuck, Neil showed the simple steps he used to create the form. And it is a perfect form to try out some carving or texturing on to make something unique and your own. Page 2 outlines the steps he presented. Thanks for a great demonstration, Neil! If you want to see more of Neil's work, check out his site at <http://www.neilturner.biz>.

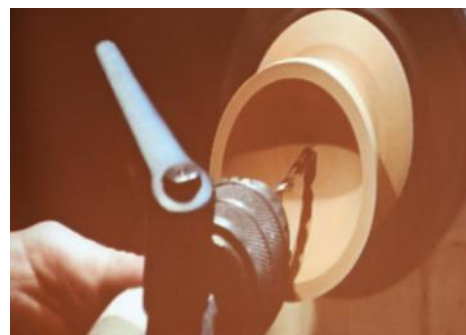
Neil Turner's Box Demonstration



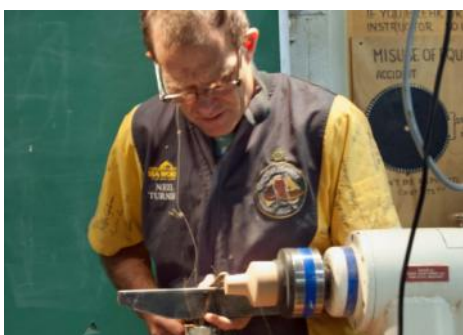
Neil starts turning the top of the box first with about 1/3 of his original cylinder. He will shape the outside using a small bowl gouge. The outside face will become the inside of the box



With the outside shape defined, Neil turns his attention to the inside of the box. He likes to have a wall thickness of about 1/4 inch so that he has plenty of stock to carve and texture.



After squaring up the mating face, Neil finds the center of the top with a skew, then drills through the top with a 1/4 inch bit. And we all try so hard not to go through the tops of our lids!



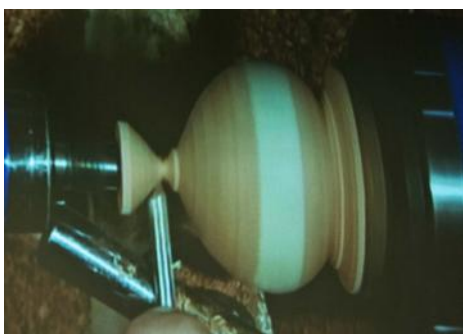
Now work starts on the base- here's the remaining 2/3rds of the original cylinder. Neil turns a post that will go through the hole in the top of the lid.



He refines the post with a shear cut, checking often for fit. After he's got the fit right, he refines the face on which the top will sit.



Before hollowing the base of the box, Neil joins the top and bottom so that he can define the outside of the base and finish off the top.



With the base partly shaped, he can part the tenon off the top of the box. Here, Neil has removed most of the top tenon between centers. Now, with a little help from some masking tape, he's ready to finish the top.

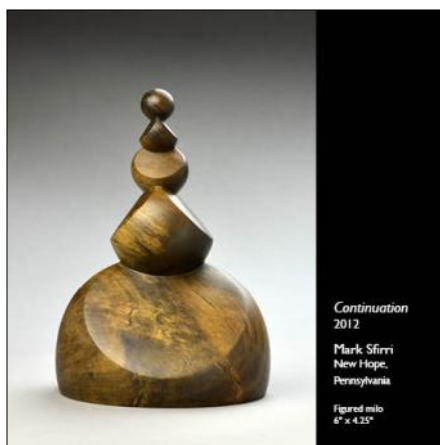


After hollowing the base, in progress here, Neil will reverse the base, use a jam chuck to take the tenon off the bottom. Once again, some masking tape and light cuts allow him to clean up the bottom without the tailstock.



Now comes the fun part-carving and texturing. It is easy to imagine different shapes and surfaces for this straight forward turning project. The outcomes are limited only by your imagination!

Major Works By Club Members



Above, *Beyond Containment*, the sixth of the Professional Outreach Program invitational series, at the 26th Annual American Association of Woodturners International Symposium, San Jose, California .

Harmony, the 7th Annual POP International Invitational Exhibition. As Above, So Below, is by artist Derek Weidman.



Currents, the AAW Annual Member Juried and Invitational Exhibition, on display September 2nd through December 29th, 2013. Left, *Fossil Sea* by Michael Kehs, above, *Torrent* by Andy DiPietro.



2013 AAW Symposium POP Excellence Award Winners: Andy DiPietro- *Entwined* (above), Mike Kehs, *Paleo Rising* (left).

Member News

From Joe Seltzer: *New Scholarships to Arrowmont and John C. Campbell Schools Available to AAW Members (if interested contact Matt Overton at mofuels@hotmail.com)*

The AAW Board of Directors is extremely excited to announce a new scholarship initiative. In recognition of the invaluable contributions made by our local chapters to our educational mission, twenty-seven scholarships to two of the nation's leading woodturning centers will be provided in 2014 to members of the American Association of Woodturners. We strongly encourage all chapters to help us promote this important new opportunity for our AAW members.

Under the program, the AAW Endowment Trust Fund (ETF) and the Arrowmont School of Arts and Crafts will make available funds for 14 \$550 scholarships at Arrowmont School of Arts and Crafts. In addition, the ETF, working with John C. Campbell Folk School will award 13 \$594 scholarships. All together, 27 scholarships will be awarded. In total, \$15,422 in scholarships will be given to AAW members.

In order to apply for the scholarships, nominees must be an AAW members and be nominated by their AAW Chapter. Star Chapters will be allotted two nominations for the first 50 members and an additional nominee for each additional 50 members. Regular chapters will be allotted one nomination for the first 50 AAW members in the chapter. After that, each additional 50 AAW members will allow another nomination. If there are more than 27 nominations, a drawing will determine the winners.

The program is to provide tuition only. Any room and board and travel to the school locations will remain the responsibility of the nominee. John C. Campbell Folk School is located in Brasstown, NC; Arrowmont is in Gatlinburg, TN. *All classes will take place in 2014.*

Chapters must provide the names of nominees, the number of chapter members and the number of AAW members in the chapter to Saint Paul, MN headquarters by November 15, 2013. Within two weeks from that date, the winners will be notified.



From Maggy Robinson: *Artists of Yardley Event*; We are hoping that some members have signed on to do a demonstration booth at our event on October 5. www.artistsofyardley.org has all the information. We can do a mini lathe and members can display items for sale. Naturally there will not be a booth charge or commission on sales. In the evening we are having a pig roast catered by Smokin Dudes. Tickets must be purchased by October 2 for the pig roast. Tell everyone to come - they will not be sorry! For more information contact maggyrobinson@hotmail.com

Jane Sowden has a tall, dead, pretty straight oak tree at her workshop (the family home she grew up in). "I'm not sure if that is of any interest to turners. I'll likely have my tree guy take it down in a month or two, and he could cut it and leave pieces of certain sizes if anyone would be wanting them. I'm really not sure if that's something anyone would want or need, but you know how I like to recycle! It's in New Britain, just west of Doylestown right off 202. You could post my email if you like: jane.sowden@me.com."

Member News

Andy DiPietro was the Featured Artist in Woodturning Magazine #257 for his Torrent Sculpture in the AAW Currents Exhibit. He also has a wood sculpture piece at the New Hope Arts Members Show from Sept 6-28th. This is a new multi-media exhibit. Three of Andy's wood sculptures can now be found in [Thomas R. Riley Galleries](#).

Bob Egee was recently approached by a vendor at a craft show about some wood currently being stored in a small barn in Silverdale. Seems the woman's husband was a logger and had accumulated a number of large pieces over the years. Her husband died about 7 years ago and the wood has been sitting since before he passed away so it is quite dry at this point. There are quite a few large burls of different species. I did take some pictures but they didn't come out well. Anyone interested in looking at the wood with the idea of buying some should contact Bob for further information at wood-hall14@hotmail.com



Mark Sfirri tells us that on Sept. 20 the [Moderne Gallery](#), in Philadelphia, will open "Nakashima Woodworkers: An Evolving Legacy." Mira Nakashima, daughter of renowned 20th Century furniture designer, George Nakashima (1905-1990), has collaborated with her team of 10 skilled craftspeople to create a new body of work that reflects the heritage of her father's custom handcrafted furniture. This exhibition at Moderne Gallery builds upon the traditional Nakashima approach of meticulous design, craftsmanship, and beautiful wood while introducing the next generation of Nakashima Woodworkers. Click on Mira's photograph (above) to go to a New York Times article describing the upcoming show.



Bryan Richardson has a sculpture in the Bucks County Sculpture Show starting September 12 at Fred Beans Family of dealerships in Doylestown. His piece is entitled "Inward and Outward" and is made of mesquite and brass.. Bryan also spotted this old wood lathe in a restaurant in Washington DC. Must have been a lot of work to use!

Jeffrey Schnell informs us that the catalog from this year's spring/summer Harmony exhibition is now online. The new and improved version includes links to many of the artists' websites. <http://galleryofwoodart.org/Harmony2013web.pdf>



New to Appreciating Woodturning and Collecting Wood Art Bryan Richardson has a new family member, Cody. "He is 1 year old, but acts a lot older than his age. His primary focus is rough turned bowls, sticks and unusual types of wood, but he is also interested in texturing." Andy DiPietro also has a new family member, Logan, an 8 week old Golden Retriever who does good wood texturing. Maybe he will become a collector, too.



You are Invited to the Hearne Hardwoods Open House!



Friday October 4th 2013, 10am - 6pm &
Saturday October 5th 2013, 10am - 4pm
(rain or shine)

200 Whiteside Drive
Oxford, PA 19363

This is a free event ~ Open to the Public

Penn State Industries
Your woodturning & dust collection source
1-800-377-7297

Visit Our Factory Showroom:

2381 Philmont Ave, Huntingdon Valley, PA 19006

215-938-5067 Mon-Fri: 8:30am to 5:00pm

Sat: 8am to 12:00 noon



Introducing the World's First
Bolt Action Pen Kit

Shop Now at www.pennstateind.com

Celebrate the new book *Hogbin on Woodturning* and enjoy A Weekend with Stephen Hogbin

ART EXHIBITION | ARTIST PRESENTATIONS | TURNING WORKSHOP
SEPTEMBER 19–23, 2013

Organized & sponsored by: The Center for Art in Wood; Bucks County Community College; Bucks Woodturners & University of the Arts (UArts)
Supported in part by Greg and Regina Rhoa.

EVENTS

THURSDAY, SEPTEMBER 19–OCTOBER 21
THE CENTER FOR ART IN WOOD, 141 N. 3RD STREET, PHILADELPHIA
Everyday Objects Exhibit

Exhibition includes objects in *Hogbin on Woodturning*
Visit the Center, Tuesday–Saturday 10 AM–5 PM
Pop-up exhibition available to tour museums and educational organizations

THURSDAY, SEPTEMBER 19, 2:30 PM
UNIVERSITY OF THE ARTS, 320 S. BROAD STREET, PHILADELPHIA
HAMILTON HALL, CBS AUDITORIUM

Relevance: Finding a Context

Stephen Hogbin's talk and slides imagine the future and finding relevant contexts for the maker

FRIDAY, SEPTEMBER 20, 6 – 8 PM
THE CENTER FOR ART IN WOOD

Pattern from Process

Discussion between Stephen Hogbin and Mark Stirri
Book signing with Stephen Hogbin and Editor John Kelsey
RSVP 215.923.8000
Supported in part by the Collectors of Wood Art (CWA)

MONDAY, SEPTEMBER 23, 2 – 5 PM
BUCKS COUNTY COMMUNITY COLLEGE, WOODSHOP

Building Creativity Workshop

Based on his book *Appearance and Reality*, Hogbin answers the questions:
Where do ideas come from? What's in the creative tool box? What makes one piece work better than another?
SESSION FILLED—no further registration
Supported by Echo Lake Conference

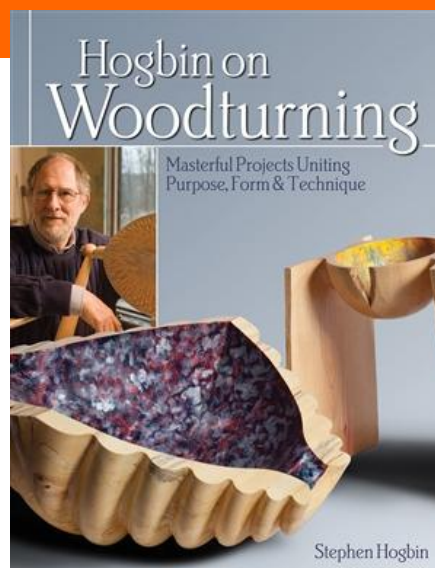
MONDAY, SEPTEMBER 23, 7:30 PM
BUCKS COUNTY COMMUNITY COLLEGE, WOODSHOP

Bucks Woodturners Meeting

The Magic of the Cross Section

Hogbin's demonstration will show how to reveal the magic of the cross section, and cut into the turned form accurately and safely.

Books available from The Center for Art in Wood
Hogbin on Woodturning \$24.95 (plus s/h)
Appearance and Reality \$29 (plus s/h)
Purchase at The Center or online at:
http://www.centerforartinwood.org/store_frame



Blue-water Trivet, 2012. Ash and Paint.

CALL FOR ARTISTS: <http://www.newhopearts.org/WoodApp2013.pdf>

NHArts banner exhibition for functional and sculptural forms in the medium of wood - honors the woodworking tradition of Bucks County.

Works in Wood



2013

Works in Wood honors the rich cultural heritage of Bucks County woodworking while celebrating the new visions of the contemporary artists who reside in our region and beyond. As a national juried show, Works in Wood features artwork from the finest talent in the country today. Works are not limited by function but must be original in design and artists must incorporate at least 50% of wood in each piece. The annual exhibition features functional and non-functional works, studio furniture, turnings, constructions, sculpture and vessels in which artists use wood as their primary media.

- **Eligibility:** The exhibition is open to artists working in wood. Innovative works are encouraged. All works must be for sale or available by commission. New Hope Arts retains 35% commission on all sales.
- **Jury process:** All works are judged in a blind jury process. Jurors consider works based on artistic excellence and aesthetic vision. Artists will be notified by email. We will not be able to accommodate phone inquiries regarding Selection Committee decisions.

Jurors: Mark Sfirri - Professor of Fine Wood Working Program at BCCC, woodworker
Michael Ingham - COO at Rago Arts

- **Application Procedure:** Each application must be accompanied by a \$25 nonrefundable application fee. Please make checks payable to *New Hope Arts*.
- Each artist may submit up to 5 pieces for consideration in high resolution jpeg format on CD. In addition to the primary image, artists may submit a second view or detail. The artist's name should appear on the disc but not on the images, and the order of the images **MUST** correspond to the list on the application form. Discs will not be returned and accepted images may be used by NHA for publicity and marketing purposes. (applications can also be EMAILED with jpeg images to worksinwood13@gmail.com)
- **Marketing:** NHArts actively markets the exhibition through local and regional media. Posters and postcards are made available to individual artists.
- **Exhibition space:** Works in Wood will be held at the New Hope Arts Center, located at 2 Stockton Avenue in New Hope, PA, 2ND FLOOR. The 3000 plus square foot exhibition space is well suited for larger works.
- **Delivery:** Artists are responsible for delivering and picking up work. Artists are also responsible for shipping fees to and from exhibition. Specifics will be included with the acceptance notice.
- **Insurance:** All works are insured while on premises for the duration of the show.

Application Deadline: Postmarked October 1, 2013.

Notification: October 12/13, 2013 by email.

Artwork Delivery: TBA upon acceptance.

Opening Reception and Awards Ceremony: Saturday, November 9, 6-8pm



CURRENT AND UPCOMING EXHIBITIONS

Presenting the finest contemporary works of art in wood

141 N. 3RD STREET • PHILADELPHIA, PA 19106 • 215.923.8000 • CENTERFORARTINWOOD.ORG

Current Exhibition: *allTURNatives: Form +*

Spirit 2013



August 2 – October 12, 2013

Celebrating the Center's 18th year hosting the International Turning Exchange Residency (ITE) program, the residents worked together for 2 months in Philadelphia to collaborate and focus on new directions in their work. This multidisciplinary exhibition will reflect each resi-

dent fellow's experiences including objects produced before and during the residency. [View the exhibition online.](#)

Upcoming Events:



Coming Full Circle A Gallery Talk with John Kelsey 2013 ITE Resident Thursday, Sept. 19 6:30 – 7:30 PM

Join us for an evening discussion with 2013 ITE Photojournalist/Artist John Kelsey.



Pattern from Process- Discussion between Stephen Hogbin and Mark Sfirri Friday, September 20 6 – 9 PM

Join us for a discussion with Stephen Hogbin and Mark Sfirri followed by a book signing of *Hogbin on Woodturning*

with Stephen Hogbin and Editor John Kelsey. Supported in part by the Collectors of Wood Art (CWA) and Greg & Regina Rhoa.

Center News:

We added a new One day turning class! This full-day class is based on the ideas and concepts shown in the book *Hogbin on Woodturning*. Students will explore examples in Hogbin's *Pattern from Process* exhibit and the permanent collection both on view at The Center. [Find out more about the course and register.](#)

A Weekend with Stephen Hogbin! Save the Dates September 19th – 21st to celebrate our popup exhibition *Hogbin on Woodturning: Pattern from Process* and related events in the area with the artist. [Learn More](#) about the weekend events.

The 2013 International Turning Exchange blog! Keep up with everything the residents are doing on the [ITE blog](#). It's a great chance to see what goes on behind the scenes.

Windgate Three Year Challenge Grant- We are thrilled to announce that The Center has been awarded a 3 year, \$600,000 challenge grant by the Windgate Charitable Foundation. Every dollar we raise up to \$100,000 each year in 2012, 2013, and 2014, will be matched by Windgate with two dollars. [More info](#) or [Donate Now](#)

Challenge VIII: Bartram's Boxes Remix- The Center for Art in Wood is pleased to offer a traveling exhibition to museums and venues throughout the country titled *Challenge VIII: Bartram's Boxes Remix*. The Center invited artists to a unique opportunity to "remix" the history, inspirations and materials from one of America's oldest gardens into sculptural objects and installations. [LEARN MORE](#)



Shadow of the Turning: The Art of Binh Pho (October 25, 2013 – January 18, 2014)

Shadow of the Turning is a traveling exhibition focuses on art, philosophy and storytelling of artist Binh Pho. Blending the mythic worlds of fairy tale, fantasy, adventure and science fiction, this exhibit creates a bridge between literature, art world approaches to concept and narrative, craft traditions and mixed media approaches. The story is "illustrated" using an exciting new body of work by Binh Pho, which combines woodturning, sculpture, painting and art glass. For more information read the [press release](#) or visit the [Shadow of the Turning](#) website.