

June 2015



## BUCKS WOODTURNERS Monthly Newsletter

AAW | AMERICAN ASSOCIATION  
OF WOODTURNERS

### Pat Kramer Demonstrating at June Meeting



Pat Kramer's Anticipation

[Pat Kramer](#) is coming in from Hawaii to show us some of his work and to share his secrets for laying out the perfect bowl. He will show us how he gets the pool pattern, that circular grain pattern in the bottom of the bowl, just right, every time. He will also talk about how he thinks about the bowl's shape and, even better, how he attains it. This meeting is on the 15th of June and will start at 7:30. The session will be steeped in technique and technicalities, so bring your thinking cap and notebook!

### Events



Mtg. June 15th- 7:30



### Other Selections

LOCAL ARTISTS RESPOND  
TO THE MUSEUM COLLECTION

MAY 1-JULY 18, 2015



## HOWs Dominate May Meeting



Bob Collins and Matt Overton show the results of their HOW with Joyce McCullough.



Linford Sine shows Chris Stone the "scary" skew during his mini-HOW at May's meeting.

What a jammed packed meeting we had in May. There were mini-HOWs by Ron Durr, Matt Overton, and Linford Sine along with lots of Show and Tells from the recent round of Hands On Workshops. Your editor hasn't finished processing the hundred or so photographs from that meeting so keep checking the website's [Photo Gallery](#) under the Events tab to see how the story evolves.

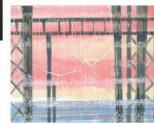


### 3 wileys & a bill June 5 - June 28



Harriet Wiley  
Herbert Wiley  
Michael Wiley  
Bill Farrauto

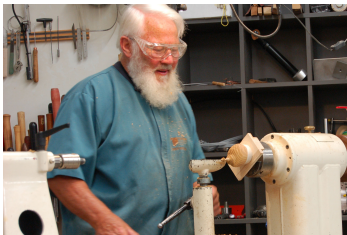
Gallery Hours:  
Friday-Sunday 12-5pm



**Opening Reception**  
**Friday, June 5**  
**5-8 pm**

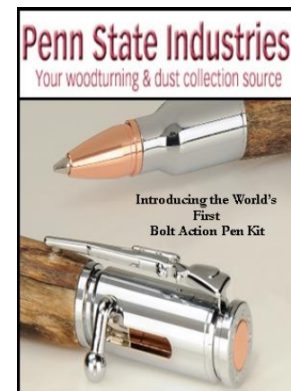
### THE 'A' SPACE

37 W. Bridge St. New Hope, Pa  
(First floor of New Hope Arts Center)



## Dick Veitch Puts on a Great Demonstration

We thought we were getting one, but we got two great demonstrations by Dick Veitch on Saturday. He showed us how he makes those fascinating tubular sculptures and he added a demonstration on box making with an eccentric top. As with most of our demonstrators, there were tips and tricks added all along the way. For example: his tool holder was a turned handle and drill chuck that holds all of his traveling tool set, his sharpening method for Forstner bits (and which Forstner bits are best), how to create an eccentric chuck from your 4 jaw chuck, and the list goes on. Check out the photos of his visit on our [Photo Gallery](#) page. You will have to keep checking, as this is another work in progress.



Shop now at  
[www.pennstateind.com](http://www.pennstateind.com)

Or visit our factory  
showroom:  
2381 Philmont Ave,  
Huntingdon Valley, PA  
19006  
215-938-5067  
Mon-Fri: 8:30 - 5:00 Sat:  
8am to 12 noon



President, Matt Overton will be hosting the club picnic on July 11th, with a rain date of July 12th, so please reserve those dates on your calendar.

A [Renaissance Fair](#) is coming to the Middletown Grange September 19th and 20th and we've been invited to participate. We can have a table in one of the buildings' lockable partitions. This will allow us to demonstrate turning and offer items for sale in a secure environment. Since this is just a two day event, it will make it easier to organize and staff. If you are interested in being part of this contact [Matt Overton](#).

---

## Ron Durr Passes on Some Shellac Details



Ron found some interesting information regarding shellacs while trying to figure out if Zinsser's Bulls Eye® Shellac was wax free. When you look at the labels,

only the spray can says 100% wax free. When he contacted Zinsser, they said that if you want to use shellac as a (first) seal coat you should only use Bulls Eye® SealCoat.™

On further research, Ron found Bob Flexner, the famous finishing expert, agrees with Zinsser's recommendation. Alternatively, he suggests using Watco or another danish oil for sealing purposes. Flexner likes shellac for a final finish, especially for refinishing fine furniture.

---

## **ITE Starts up**

*Philadelphia's internationally renowned The Center for Art in Wood announces the 2015 Windgate ITE International Residency Fellows and Exhibition. The Windgate ITE International Residency is a collegial experience in which the resident fellows explore new work through research, exploration and collaboration. Working together in the studio makes possible an open exchange of creative and technical innovations. Residents are encouraged to pursue both individual and collaborative work that is explorative and experimental.*

2015 marks the twentieth year the Center has sponsored this international residency program in Philadelphia. Five artists, one scholar and one photojournalist have been selected by the Windgate ITE Selection Committee: Doug Finkel, artist/educator, Baltimore, MD; Susan Hagen, artist/educator, Philadelphia, PA; Jack Larimore, artist/educator, Philadelphia, PA; and Mark Sfirri, artist/educator, New Hope, PA. This year the Windgate ITE Residency Program will again be hosted at the University of the Arts (UArts) Wood Shop and dormitories on South Broad Street.

The Windgate ITE Resident Fellows begin their residency in Philadelphia in June 2015. All will live, travel, and work independently and collaboratively for



the next 10 weeks. Typical activities include visits to local and regional museums, nature areas, historic sites, and public and private collections of art. Sponsored and programmed by The Center for Art in Wood, Philadelphia, and hosted by our partner, UArts, the residency will focus on research, discussions, studio work, experiments and collaborations. Here are the fellows:



Julia Harrison is an artist, educator, and anthropologist based in Seattle, Washington. She works with wood on a small scale to create intimate, detailed, and often wearable objects.



Rex Kalehoff is a wood sculptor and educator in New York City, practicing and sharing the traditions of fine woodworking and wood furniture design. As Studio Manager and Lead Instructor at Makeville Studio, NYC's only woodworking shop open for public use and learning, Rex teaches and mentors people from around the world.



Zina Manesa-Burloiu is a traditional Romanian wood carver. Her work reflects the deep respect she holds for her culture and the wood traditions of the great masters from whom she learned to carve.



Adrien Segal is an artist with a degree in furniture design and woodworking from California College of the Arts. Her work integrates scientific research, data visualization, aesthetic interpretation, and materiality as a means to reconcile scientific conventions of reason with an intuitive sensory experience.



Grant Vaughan is a wood carver who works and teaches from his studio in Rock Valley, New South Wales, Australia. After studying architecture he spent many years as a furniture designer / maker and his portfolio includes display cabinets for the new Australian Parliament

[Subscribe](#)

[Share ▼](#)

[Past Issues](#)

[Translate ▼](#)

[RS](#)



Seth C. Bruggeman is an Associate Professor of History at Temple University where he directs the Center for Public History. A graduate of the College of William & Mary's PhD program in American Studies, Bruggeman studies the role of memory in public life, and particularly how American have used objects-in museums, historic sites, and other commemorative spaces-to exert control over how we understand the past.



Winifred Helton-Harmon is an exhibiting and published photographer living in Bethlehem, PA. She garners her inspiration from the natural world and the interaction of humans within it. Examples of her work can be found by clicking on the image.

---

*Copyright © 2015 Bucks Woodturners, All rights reserved.*

[unsubscribe from this list](#)

MailChimp